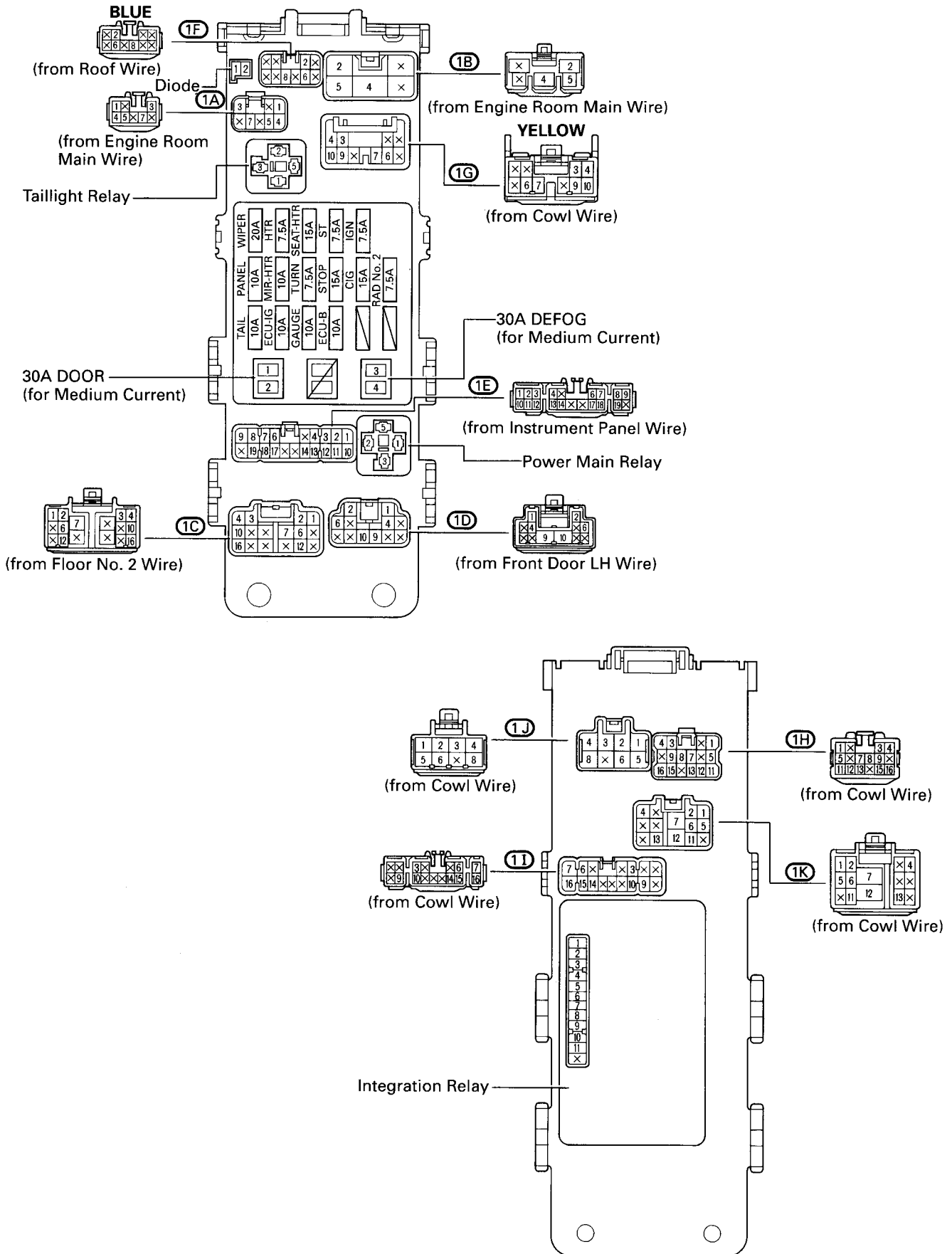


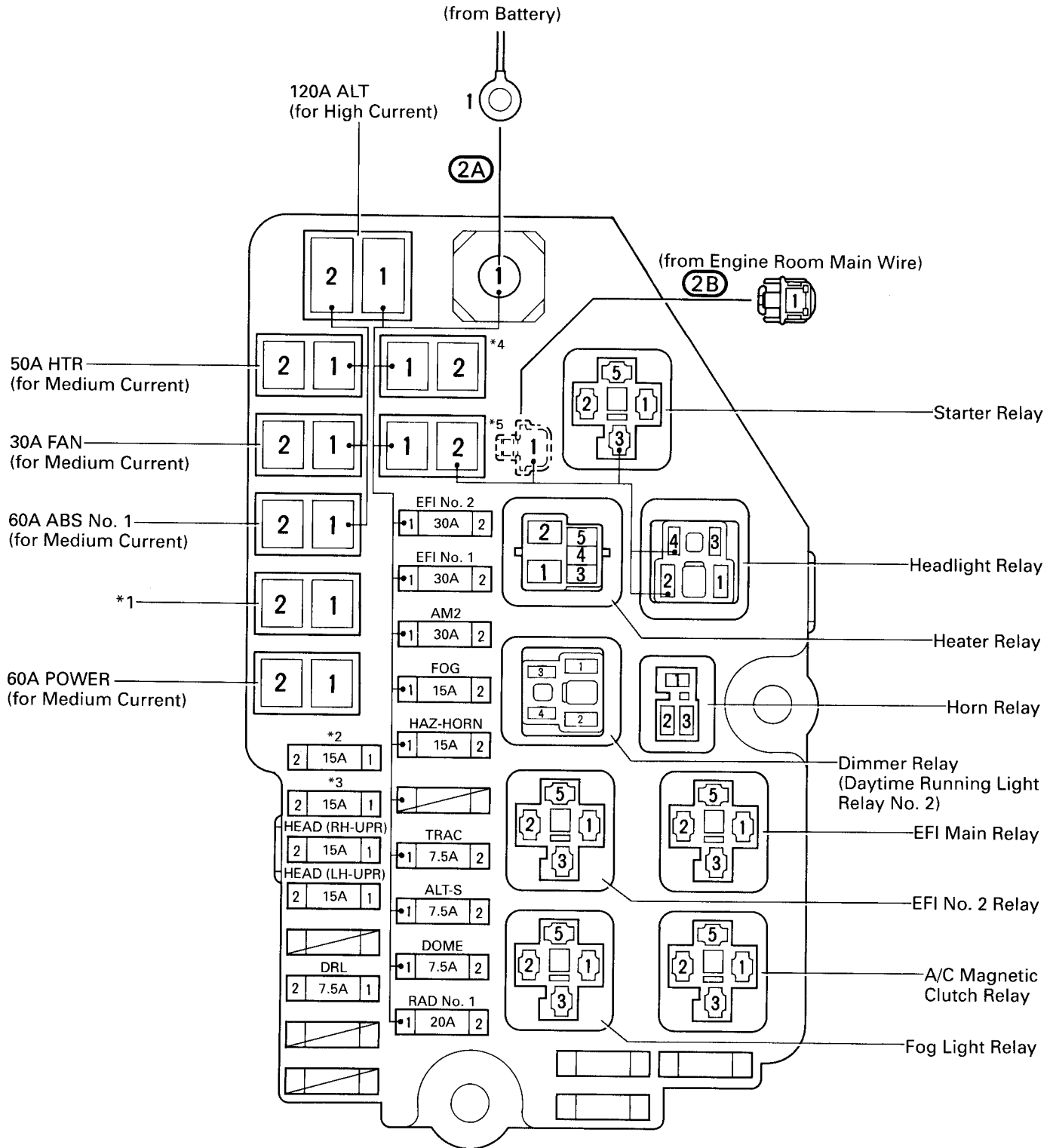
RELAY LOCATIONS

○ : J/B No. 1 **Left Kick Panel** (See Page 18)



RELAY LOCATIONS

② : R/B No. 2	Engine Compartment Left (See Page 18)
○ : J/B No. 2	



*1: { 50A AM1 (for Medium Current) (for USA)
 { 60A AM1 (for Medium Current) (for CANADA)

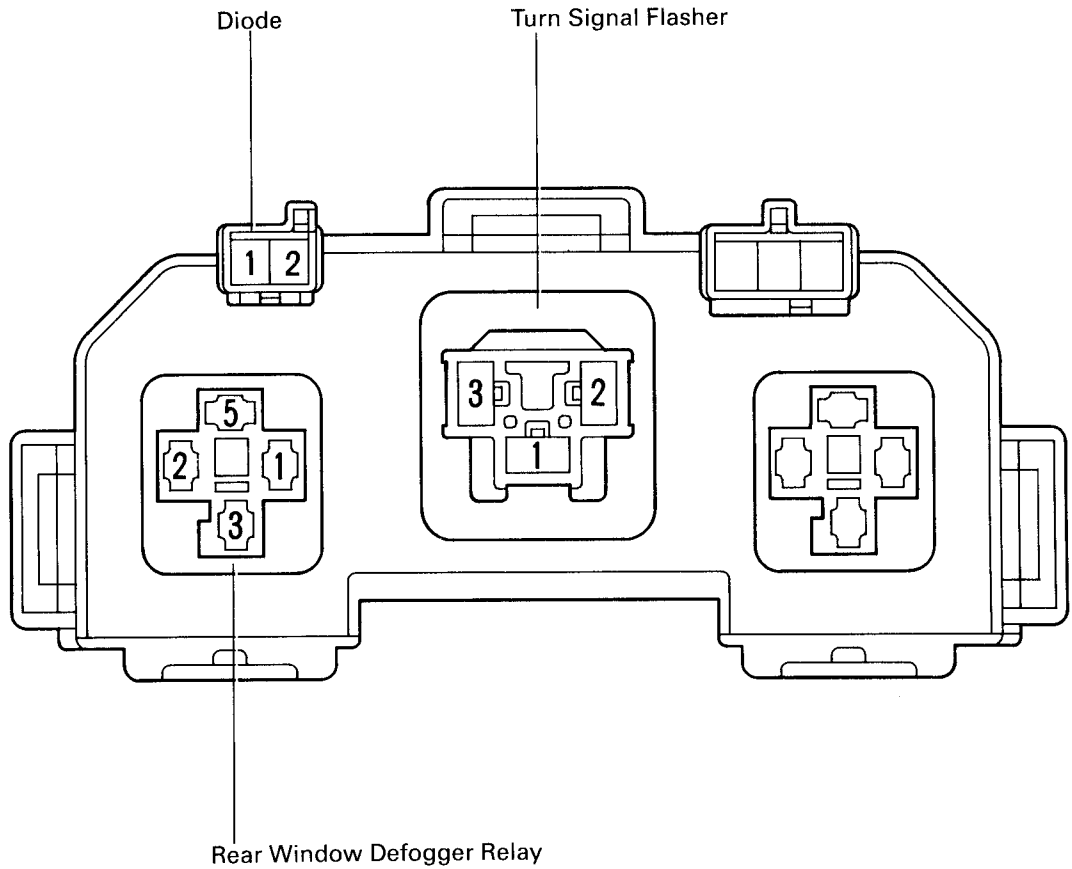
*2: { HEAD (RH) (for USA)
 { HEAD (RH-LWR) (for CANADA)

*3: { HEAD (LH) (for USA)
 { HEAD (LH-LWR) (for CANADA)

*4: 30A ABS No. 2
 (for Medium Current)

*5: 50A MAIN
 (for Medium Current)

④ : R/B No. 4 Left Kick Panel (See Page 18)



⑤ : R/B No. 5 Engine Compartment Right (See Page 18)

